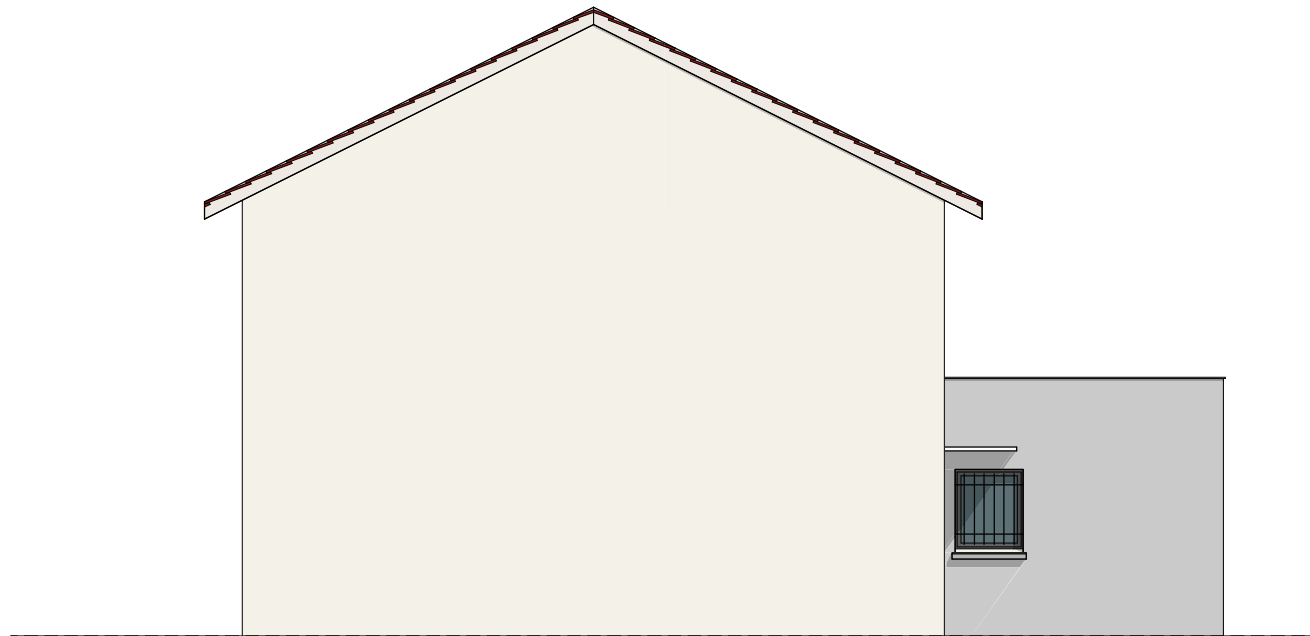
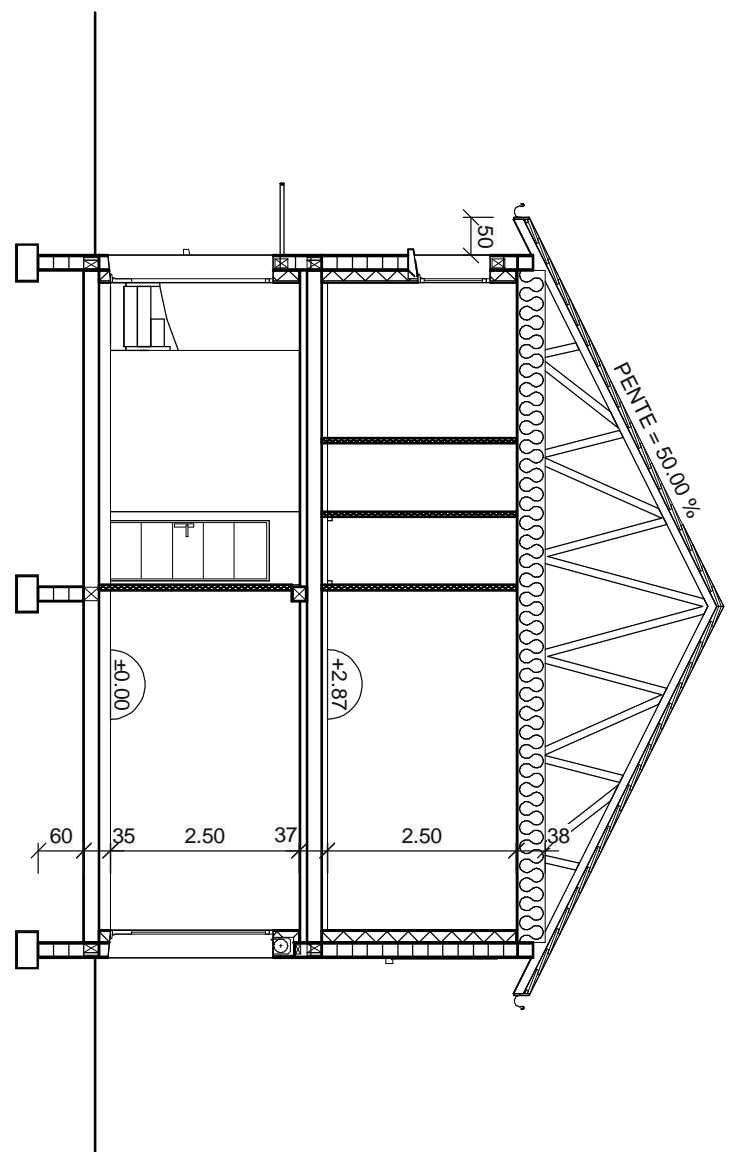
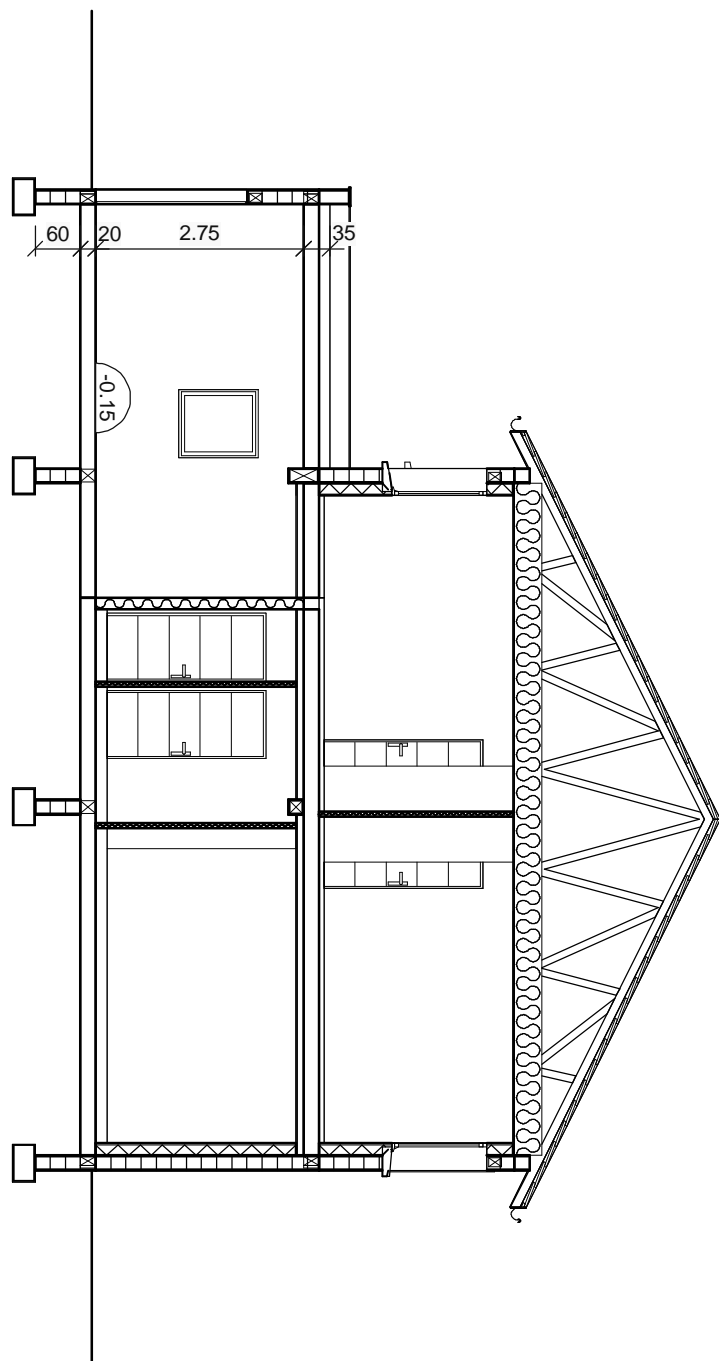
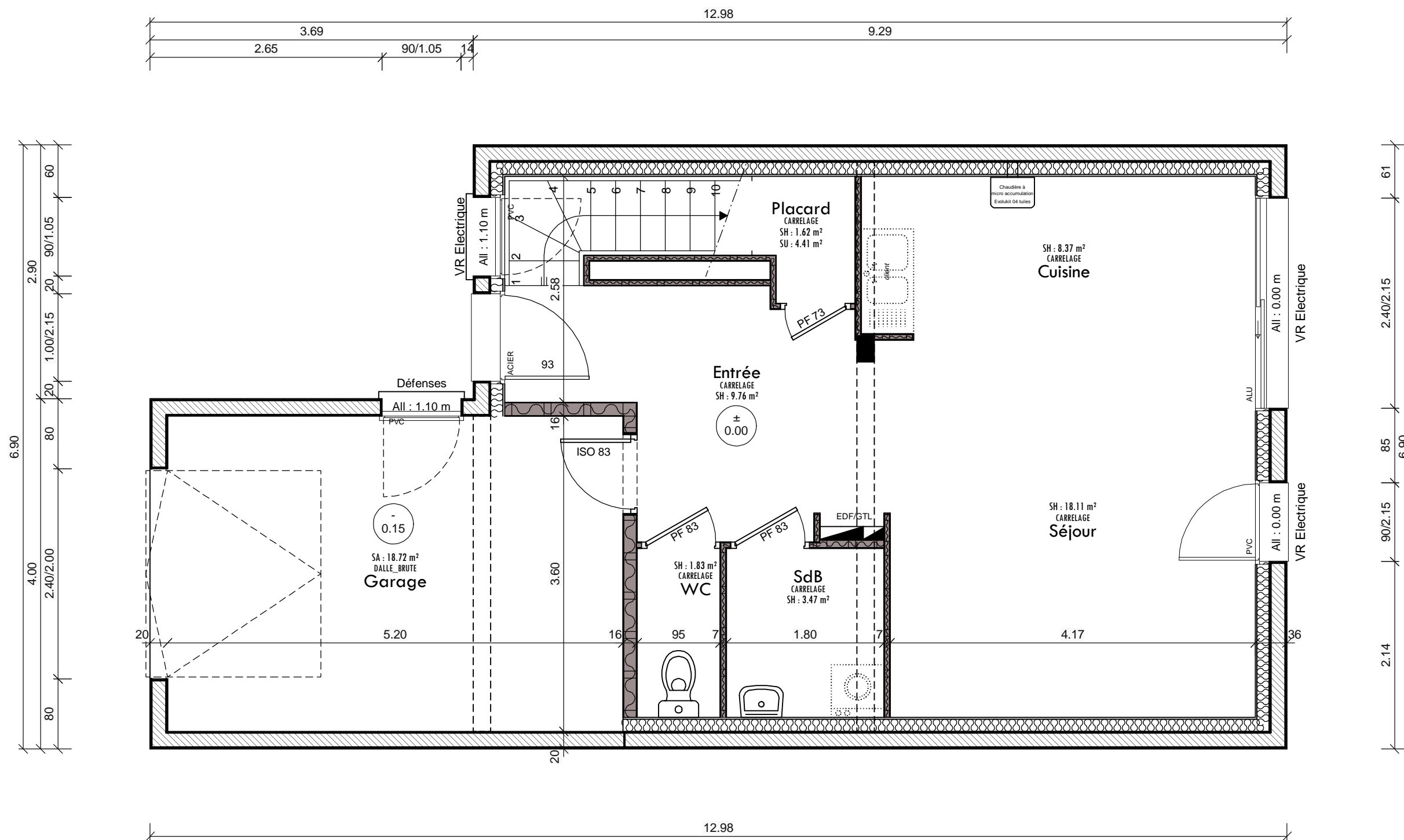


Couvertures: tuiles de type "Standard 9" ton rouge vieilli
Crépi: Gratté ton pierre claire
Menuiseries: PVC ton gris anthracite RAL 7016
Baies: ALU ton gris anthracite RAL 7016
Volets: roulants ALU ton gris anthracite RAL 7016
Dépasse de toiture bois ton bois.







SURFACES HABITABLES

RDC

Entrée	9.76 m²
Séjour	18.11 m²
Placard	1.62 m²
SdB	3.47 m²
WC	1.83 m²
Cuisine	8.37 m²
Total	43.16 m²

ETAGE

Chambre 1	12.71 m²
Chambre 2	13.13 m²
Chambre 3	11.95 m²
Dgt	3.37 m²
SdB	6.28 m²
Total	47.44 m²
TOTAL HAB.	90.60 m²

SURFACES ANNEXES

RDC

Placard	2.79 m²
GT	0.43 m²
Total	3.22 m²
TOTAL ANN.	3.22 m²

SURFACES GARAGE

RDC

Garage	18.72 m²
Total	18.72 m²
TOTAL GAR.	18.72 m²

SURFACES OUVERTES

ETAGE

Toit Végétalisé	12.56 m²
Total	12.56 m²
TOTAL OUV.	12.56 m²

